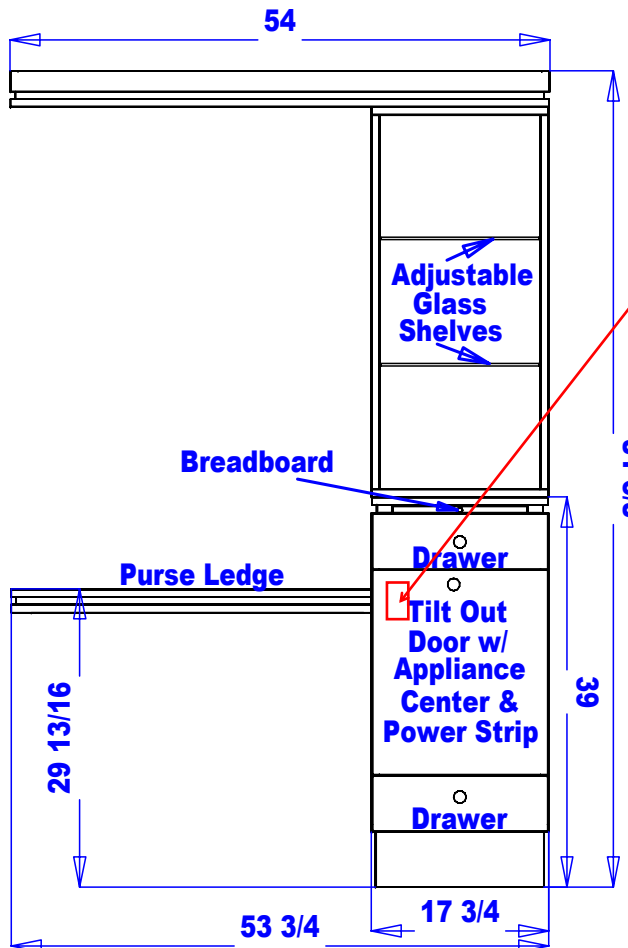
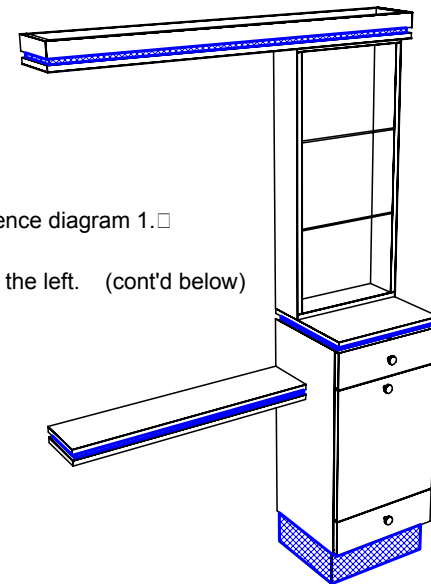


This drawing is the property of Collins Manufacturing Company and is protected under copyright law.

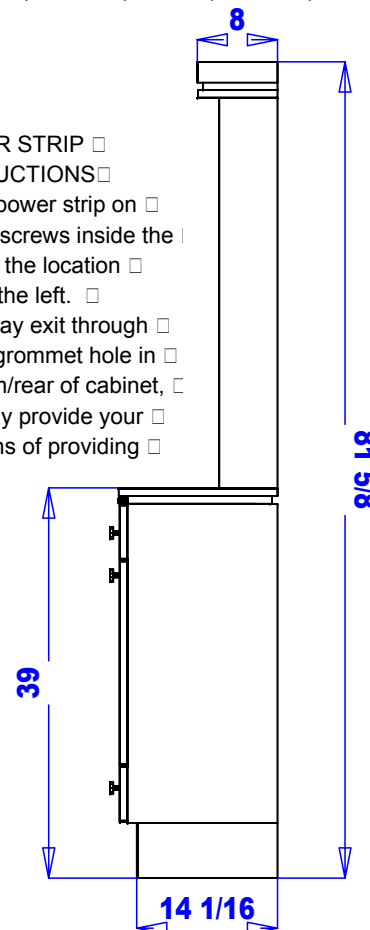
#### INSTALLATION INSTRUCTIONS

1. Flip all knobs/pulls from inside cabinet to outside, reference diagram 1.
2. Install Appliance Center .... see diagram 3 for details.
3. Install the power strip ... see power strip instructions to the left. (cont'd below)



#### POWER STRIP INSTRUCTIONS

1. Mount power strip on mounting screws inside the cabinet at the location shown to the left.
2. Cord may exit through provided grommet hole in the bottom/rear of cabinet, or you may provide your own means of providing power.



#### INSTALLATION INSTRUCTIONS CONTINUED

3. Attach cabinet to wall ... see diagram 9 for details.
4. Remove top drawer. Refer to diagram 8.
5. Set retail on top of cabinet and attach using provided 2 3/4" bolts and washers up through top of cabinet into bottom of retail.
6. Re-install top drawer removed in step 4.
7. Attach shelf to wall and cabinet, 48 1/4" down from the top of the retail cabinet (if using a 48" mirror). Attach to wall using 3" wood screws into at least two studs and attach to cabinet using (2) 1 1/2" wood screws and beauty washers.
8. If using 36" x 48" mirror, install mirror using provided J-clips and 5/8" flat head screws. See diagram 2 for more details.
9. Attach soffit to wall and retail cabinet. Attach to retail cabinet down through top using (2) 2 3/4" bolts and washers and attach to wall using 3" wood screws being sure to hit at least two studs, preferably three.

#### Quantity -

#### Finish Schedule

Face Color -  
Top Color -  
Toe Color -  
Pulls -  
Interior -  
Other (Specify) -

#### Installation Notes:

1. All hardware needed for assembly is included.
2. Large items are preassembled at the factory to ensure proper alignment. Items are then disassembled into manageable sections for shipping purposes and ease of reassembly.
3. Shipping cleats need to be removed before installation. These cleats are installed to prevent damage.

**collins**

Collins Manufacturing  
2000 Bowser Rd.  
Cookeville TN 38506

Title: **QSEp Sears Tower Station w/ 36" Ledge**

Size: # **409-54**

Drawn By:

Date:

Sheet #: **1**