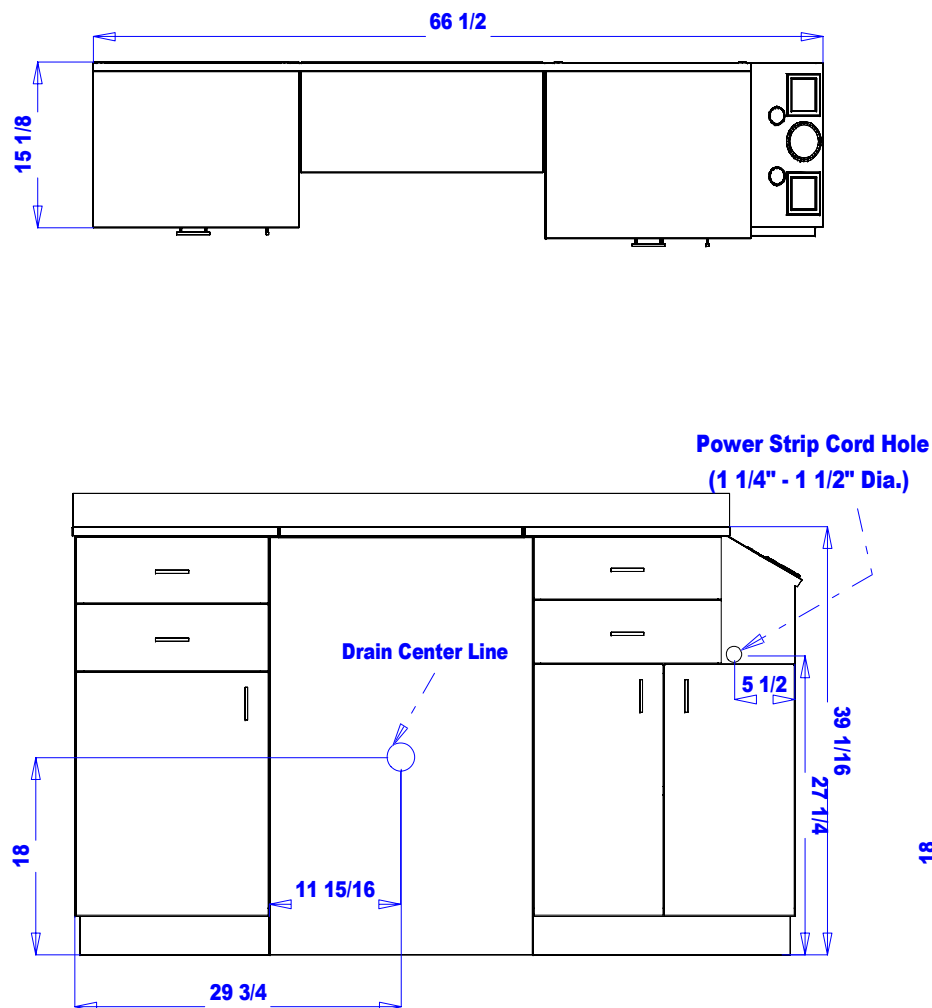
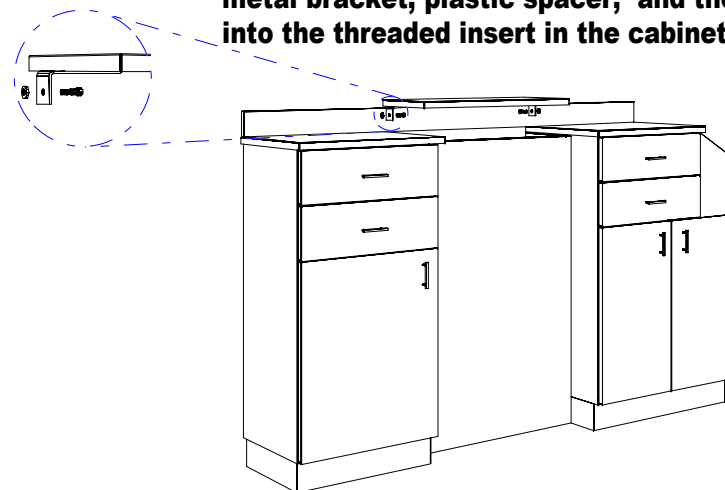


Plumbing/Electric



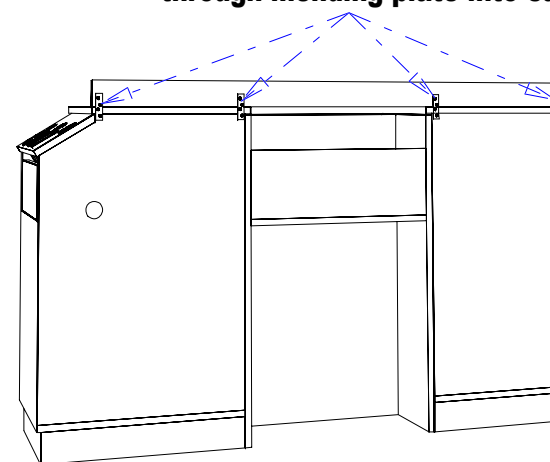
Lift Lid Installation

Lift lid should be attached to the cabinet by inserting the shoulder bolt through the metal bracket, plastic spacer, and then into the threaded insert in the cabinet side.



BackSplash Installation

Attach BackSplash flush on each end of cabinet by inserting provided screws through mending plate into cabinet.



Finish Schedule

Face Color -
Top Color -
Toe Color -
Pulls -
Interior -
Other (Specify) -

Installation Notes:

1. All hardware needed for assembly is included.
2. Large items are preassembled at the factory to ensure proper alignment. Items are then disassembled into manageable sections for shipping purposes and ease of reassembly.
3. Shipping cleats need to be removed before installation. These cleats are installed to prevent damage.

collins

Collins Manufacturing
809 E 20th Street
Cookeville TN 38501

Title: **QSE 39hi Deluxe Barber Station**

Size: # **511-66**

Drawn By:

Date: **09/03/03**

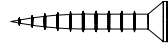
Sheet #: **1**



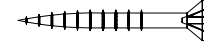
____ ea. 5/8" PH Wood Screw



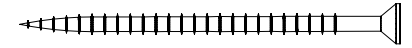
____ ea. 5/8" FH Wood Screw



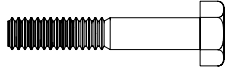
____ ea. 1 1/4" FH Wood Screw



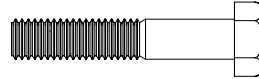
____ ea. 1 1/2" FH Wood Screw



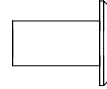
____ ea. 3" FH Wood Screw



____ ea. 1 1/2" 1/4-20 Hex Bolt



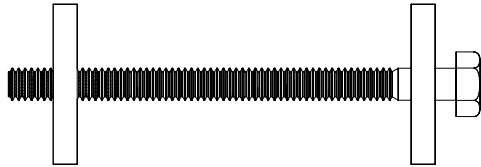
____ ea. 1 3/4" 5/16-18 Hex Bolt



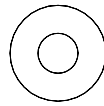
____ ea. Connector Nut



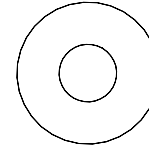
____ ea. Connector Bolt



____ ea. 3 1/2" 1/4-20 Counter Top Draw Bolt



____ ea. 3/4" Flat Washer



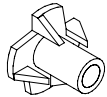
____ ea. 1" Flat Washer



____ ea. Beauty Washer



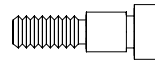
____ ea. Nylon Washer



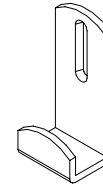
____ ea. 1/4-20 T-Nut



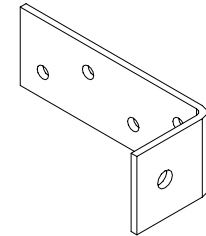
____ ea. 1/4-20 Threaded Insert



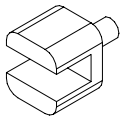
____ ea. 3/4" 1/4-20 Shoulder Bolt



____ ea. Mirror J-Clip



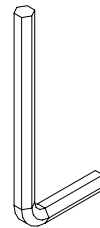
____ ea. Lift Lid Bracket



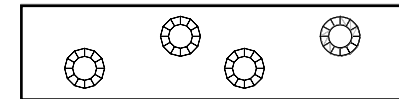
____ ea. 5mm Glass Shelf Retainer Pin



____ ea. 5mm Shelf Pin



____ ea. 5mm Allen Wrench



____ ea. Mending Plate



____ ea. 3 1/2" x 42" Mirror Support

collins

Collins Manufacturing
2000 Bowser Road
Cookeville, TN 38506

Not To Scale

Typical Installation Hardware Details