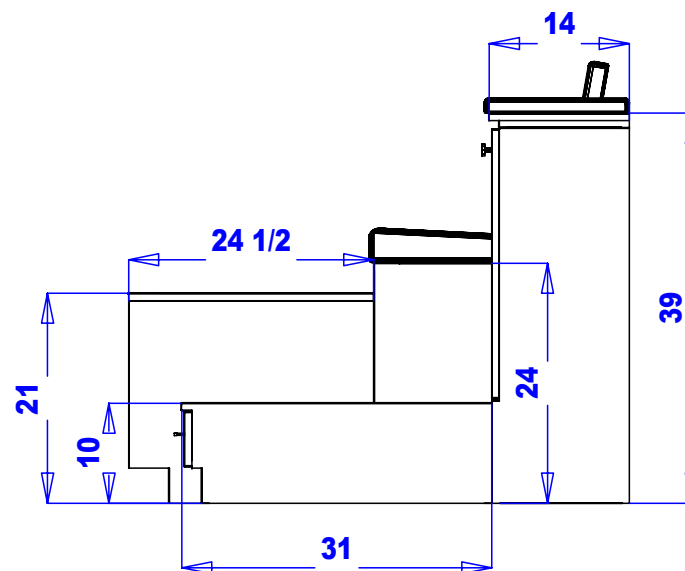
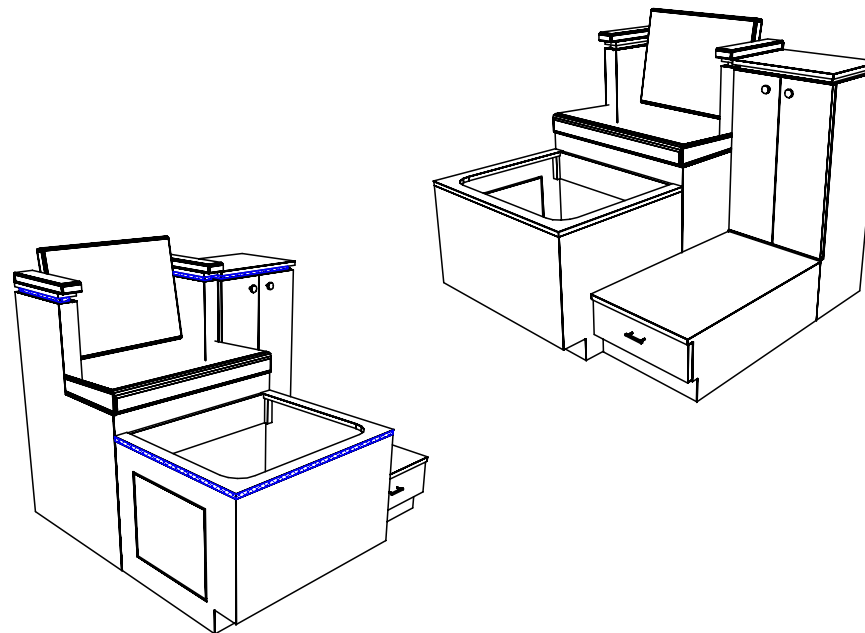
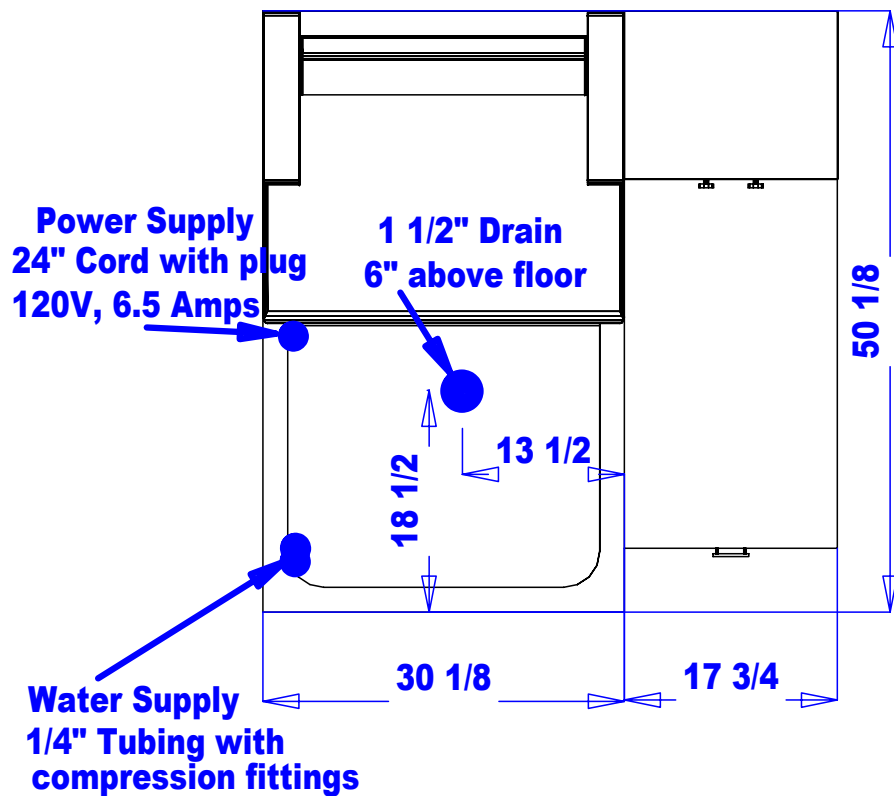


This drawing is the property of Collins Manufacturing Company and is protected under copyright law.



Finish Schedule

Face Color -
 Top Color -
 Toe Color -
 Pulls -
 Interior -
 Other (Specify) -

General Notes:

1. All counter tops are to be made removable wherever possible.
2. Items must be broken into manageable sections For Shipping. Mark For Ease Of Reassembly.
3. Install Shipping Cleats Wherever Possible To Prevent Shipping Damage.
4. Purchased items Must Be Trial Fit Before Shipping.

collins

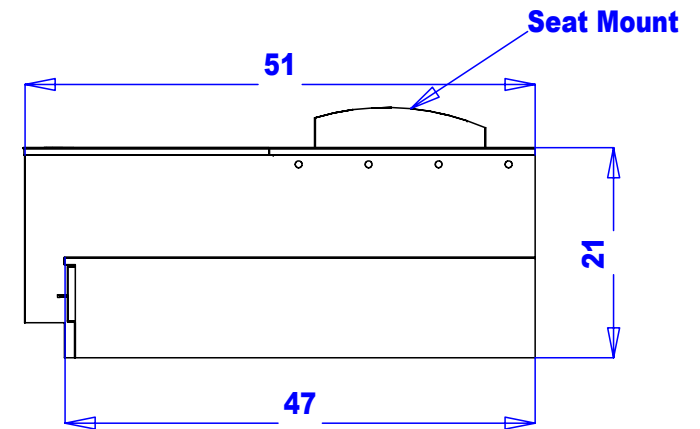
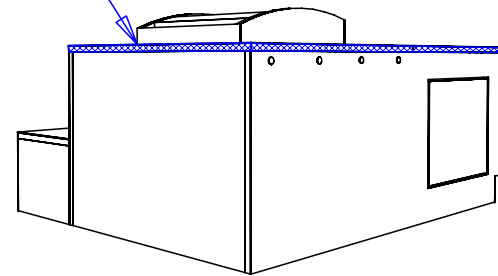
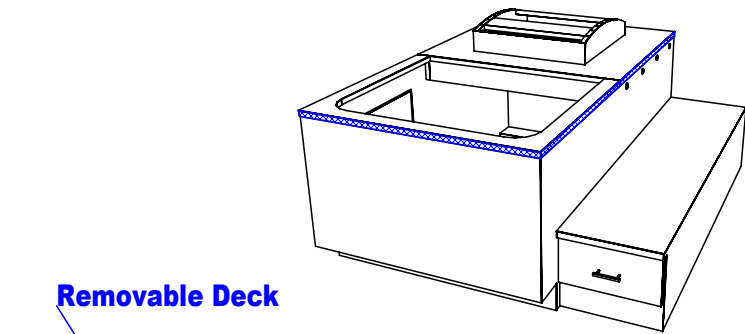
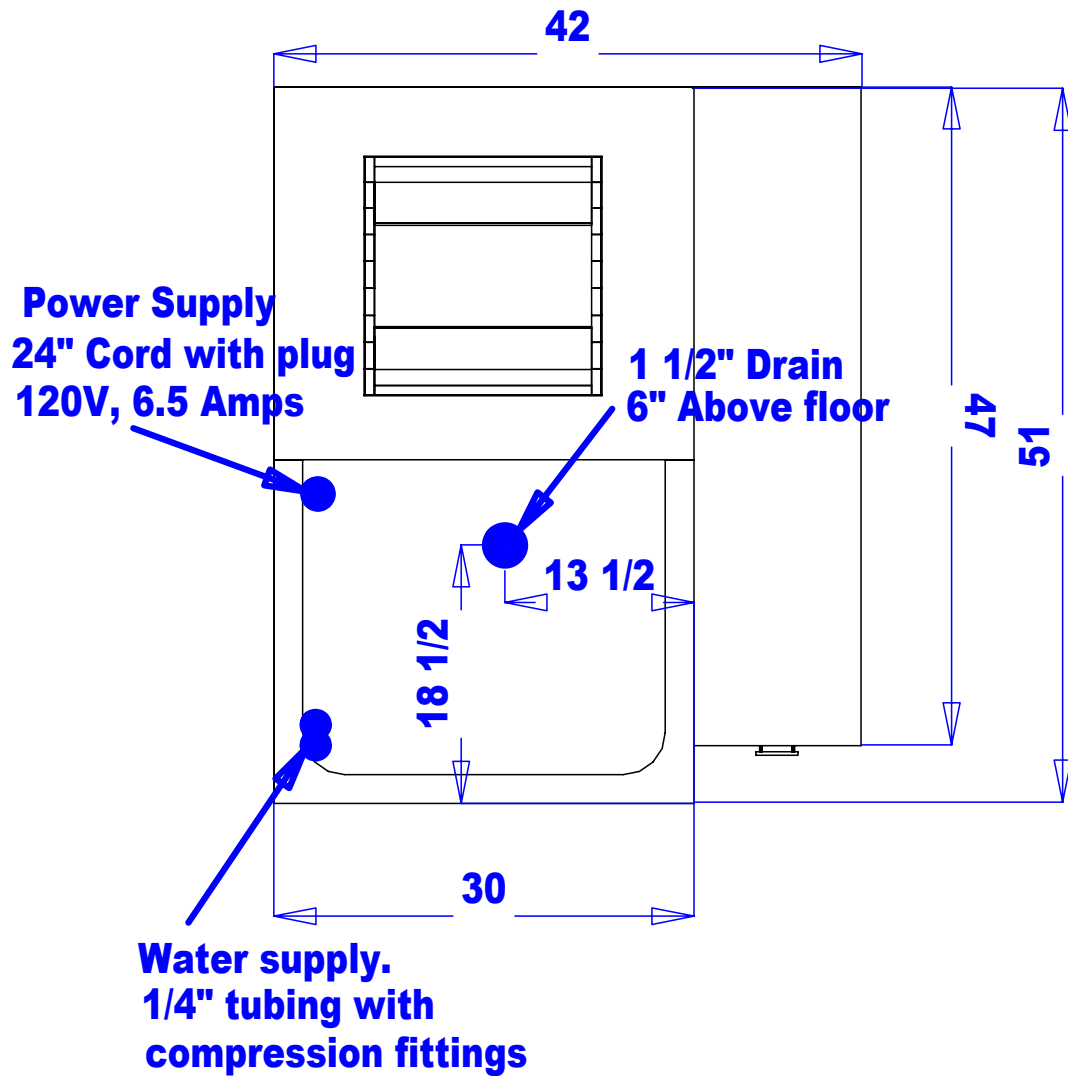
Collins Manufacturing
 809 E 20th Street
 Cookeville TN 38501

Title: **Pedicure Plumbing Specs**

Size: # **QSE Pedicure** Drawn By: **Steve**

Date: **12/03/03** Sheet #: **1**

This drawing is the property of Collins Manufacturing Company and is protected under copyright law.



Finish Schedule

Face Color -
Top Color -
Toe Color -
Pulls -
Interior -
Other (Specify) -

General Notes:

1. All counter tops are to be made removable wherever possible.
2. Items must be broken into manageable sections For Shipping. Mark For Ease Of Reassembly.
3. Install Shipping Cleats Wherever Possible To Prevent Shipping Damage.
4. Purchased items Must Be Trial Fit Before Shipping.

collins

Collins Manufacturing
809 E 20th Street
Cookeville TN 38501

Title: **Pedicure Plumbing Specs**

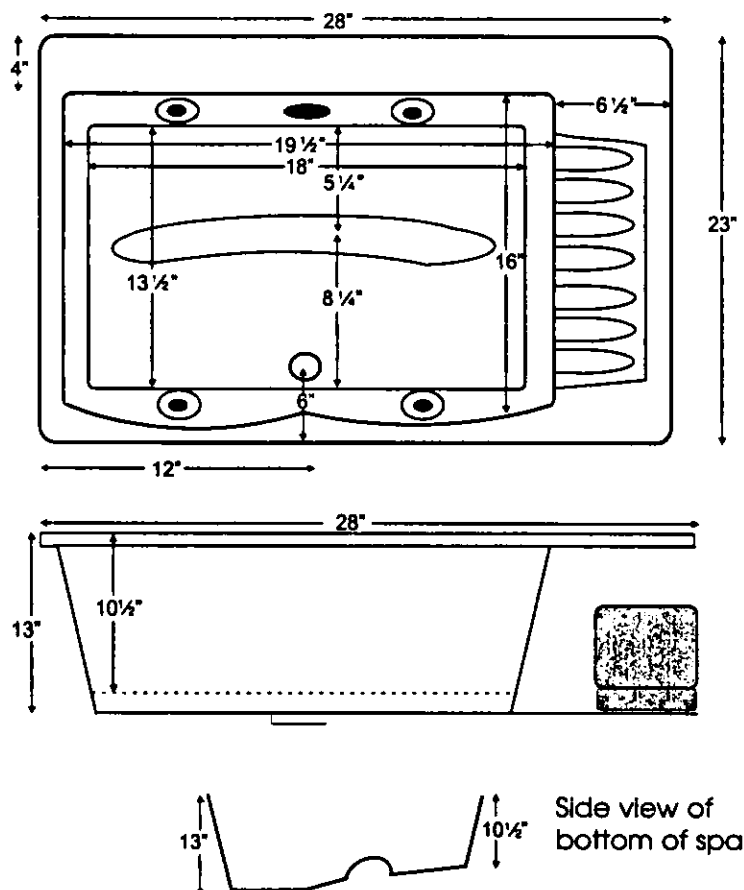
Size: # **QSE Pedicure** Drawn By: **Steve**

Date: **12/03/03** Sheet #: **6**

Collins QSE Premium Pedicure Systems ... General Specifications of Foot Spa

GENERAL SPECIFICATIONS:

Overall Size Jetted Foot Spa - 28" x 23" x 13"



CONSTRUCTION and FEATURES:

- Durable, high-gloss Lucite® cast acrylic in white (standard)
- 30 other bold, pastel, premium and marble colors also available at an upcharge
- Reinforcement consisting of fiberglass and resin
- 4 directional mini-jets
- Raised foot bar on bottom of spa for foot exercises
- Sloped spa floor for extra comfort
- 1 BHP Pump
- 1 On/off control
- 1 Silent air volume control
- 1 Suction fitting with removable filter
- 2" drain
- No holes drilled standard; Up to four holes drilled by MTI at no additional charge (holes drilled every 4" from center)
- One year warranty
- Quality tested and certified by the NAHB

ADDITIONAL FEATURES:

- **Fill-Flush® Cleaning System** - Self-cleaning system for internal plumbing lines to ensure a sparkling clean foot bath every time. Includes a compact single-lever chrome water control handle.
- **Breda Valve** - Required for backflow prevention in some areas

Without the Fill-Flush Cleaning System, the Jentle Ped should be cleaned after each use by filling the sink with water, adding cleaning solution, running the pump for about three minutes and draining the water. The Fill-Flush System saves both time and water.

LIMITED WARRANTY

The Jentle Ped™ Foot Spa by MTI is warranted to be free from defects in materials and workmanship for ONE year from the date of purchase by the original buyer. This Warranty Excludes:

1. Any obligation other than replacement of defective parts, when presented to the selling distributor, together with proof of purchase, during the warranty period.
2. Any labor charges, removal and reinstallation expense, freight or any incidental or consequential damages resulting from any defective product.
3. Products classified as "options or accessories," although they may be covered under their own manufacturer's warranties.
4. Normal wear and tear.

This warranty shall be voided by any of the following:

1. Modification
2. Improper installation, care or maintenance of the product.
3. Use of the product for any purpose or in any manner other than for which it is specifically intended
4. Failure to test the unit properly prior to complete enclosure
5. Activating the Whirlpool Action with no water in the sink or if the water level is below the jets

This warranty supersedes any and all other warranties, express or implied. The foregoing warranties are exclusive and made only to the original buyer. No other warranty, whether expressed, implied, or statutory including any warranty of merchantability or fitness for particular purpose shall exist in connection with any of the goods or services supplied hereunder, and all such warranties are hereby expressly excluded. No employee, agent, or other person is authorized to give any warranties on behalf of MTI in addition to or different from those herein given, or to assume for MTI any other liability in connection with any of its products except in a writing which is signed by an officer of MTI expressly and intentionally giving such warranties or assuming such liability.

Installation Instructions

IMPORTANT! Read all instructions carefully before beginning installation or drilling of the sink.

ATTENTION INSTALLER! This whirlpool sink has been water tested at the MTI factory and found to be fully operational and leak free prior to shipping. Freight handling and job site exposure may have deteriorated the sink's condition. **THIS UNIT MUST BE TESTED FOR OPERATION AND LEAKS PRIOR TO ENCLOSURE. FAILURE TO DO SO WILL VOID WARRANTY.**

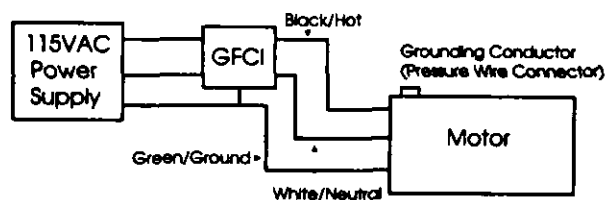
INSTALLATION

1. Place the sink **UPSIDE DOWN** on the countertop.
2. With a pencil, trace a line around the outside edge of the sink onto the countertop.
3. Remove the sink from the countertop.
4. Measure in 1/2" and draw new lines inside the first sink outline.
5. Cut out the countertop on this line.
6. Caulk under the lip of the sink and place it into the hole cut-out (no clamps or screws required).
7. Clean the excess caulk off the countertop and let dry for 24 hours.

Before installing your new Jentle Ped™ Foot Spa in the countertop opening, you must drill any additional faucet or accessory holes. Proper care must be taken in drilling these holes to avoid damaging your new sink. Use a proper sized hole saw to allow a hole large enough for your faucet or accessory.

1. Locate and mark the underside where you wish to drill additional holes.
2. Drill from the bottom first, taking care **NOT** to drill completely through the top surface. Stop drilling when the pilot bit pierces the top surface of the sink. Do not apply excessive pressure. Allow the drill to do the work.
3. Drilling from the top, place the pilot bit in the hole you just made while drilling from the back. Taking care to drill straight down, drill completely through the sink.

ELECTRICAL REQUIREMENTS - Every Jentle Ped™ Foot Spa is supplied with a 1 BHP, 110 Volt pump that draws 5.5 amps. It comes with a 3' grounded plug to be plugged into a standard grounded receptacle. You will need a 10 AMP dedicated line with a GFCI outlet. The pump is activated by a pneumatic on/off switch and push button. These are connected to the pump by an air line that must be secure to the on/off button and pump mounted air switch.



OPERATING INSTRUCTIONS - The Jentle Ped™ Foot Spa is installed with a deck-mounted pneumatic on/off switch,

eliminating the need for an external switch, although one may be provided by the installer. To activate the pump, depress the on/off button. To deactivate, depress the button again. Water pressure in the Jentle Ped™ Foot Spa may be adjusted from a very high agitation to a low, swirling action. Turn the deck-mounted air volume control knob counter-clockwise to decrease the pressure and clockwise to increase.

PLEASE NOTE - Activating the pump with no water in the sink could result in damage to the pump and internal seals and could void the warranty. **ALSO**, MTI does not recommend installing the Jentle Ped™ Foot Spa in an undermount application. However, if you choose to do so, please consult with the manufacturer/dealer of the countertop.

RECOMMENDED USES

The Jentle Ped™ Foot Spa is recommended for soothing footbaths and hydrotherapy foot massage. Use the raised bar in the sink bottom to exercise the arch and plantar areas of the foot. **CAUTION:** Be careful when using products containing acetone, including nail polish and nail polish remover, in or near the Jentle Ped™. Acetone may damage the Jentle Ped™'s acrylic surface and void the warranty.

Remember, if you do damage the surface of the sink, minor cuts or scratches usually can be buffed or polished out of the finish.