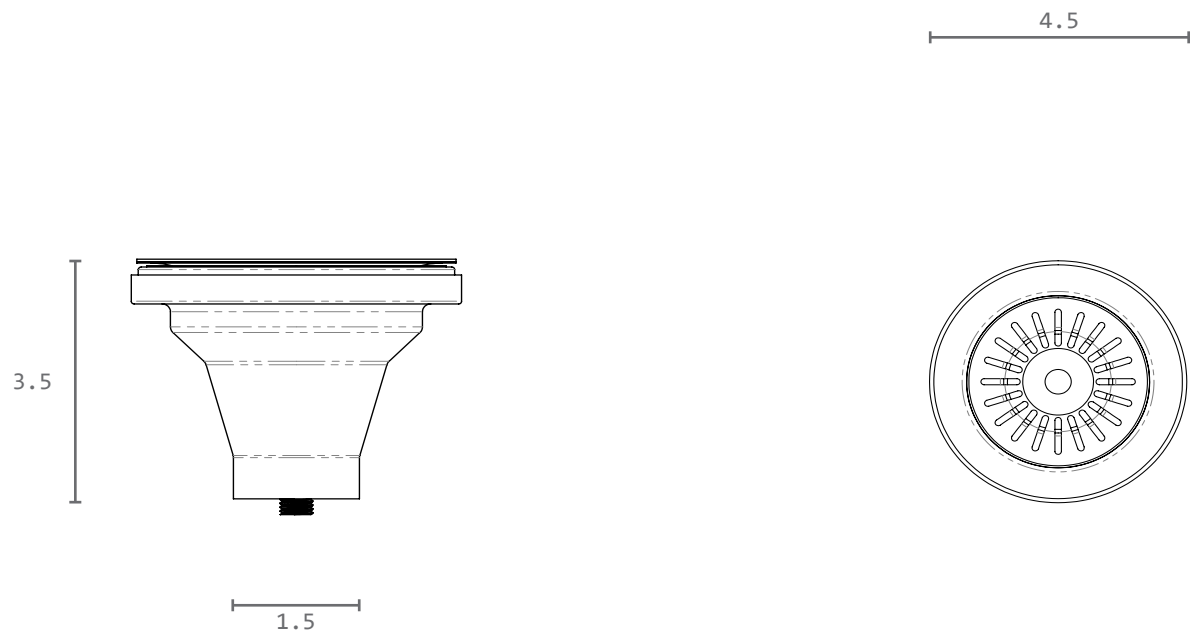


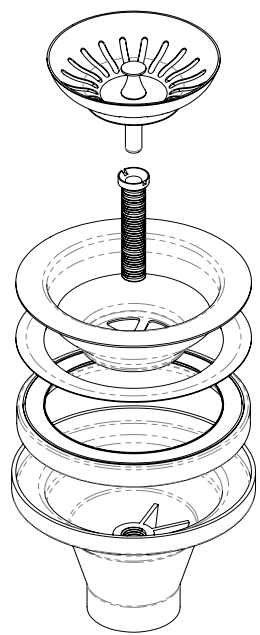
Drain Assembly for tilting Shampoo Bowl

Part Number : 662S

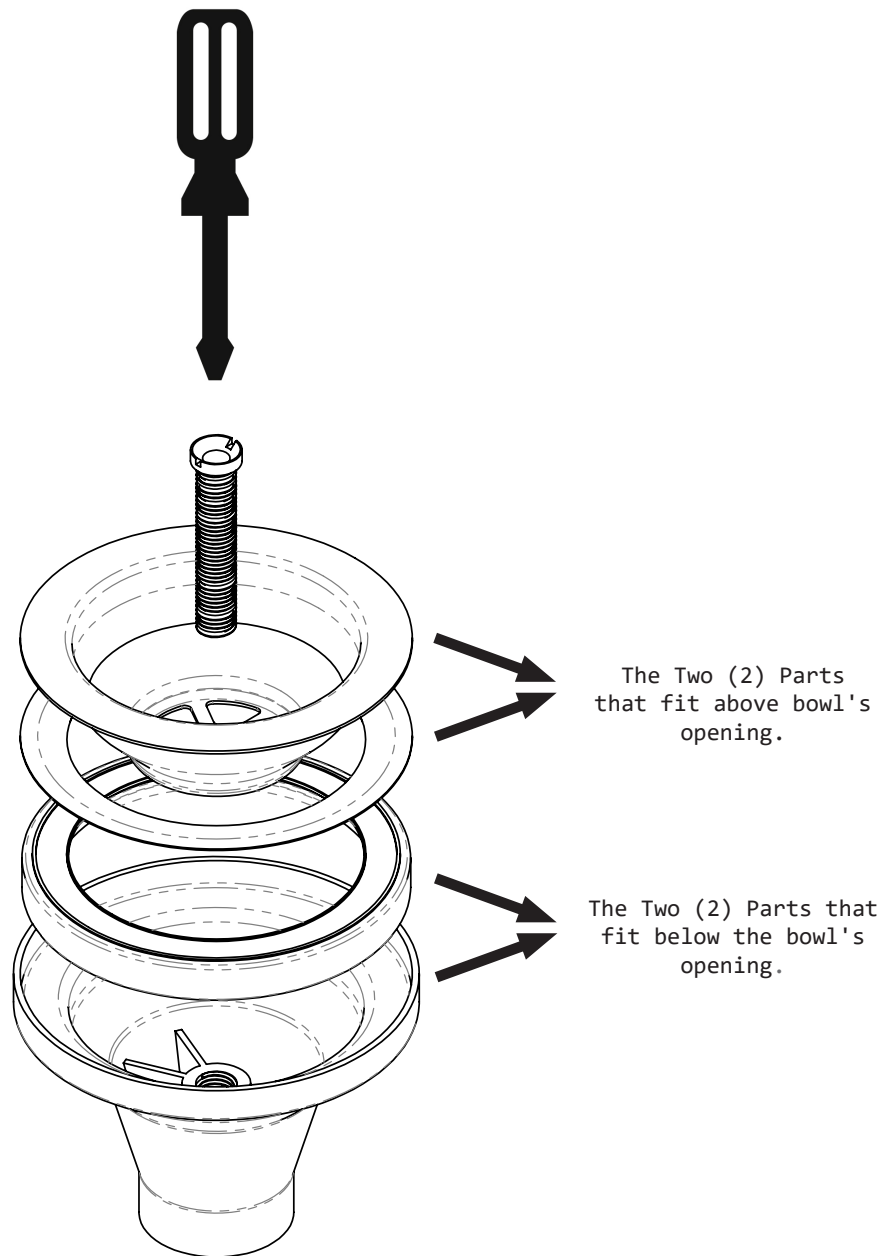
Dimensions in inches



Components / Parts



Installation



1.

Screw the Tube Bolt through the top and into bottom part. Lightly tighten with a large screw driver. The New Tube Bolt has a 1/2" Hex Head so it may be tighten with a nut driver, a socket or screw driver.
* The installation must be done by a certified plumber * Do NOT over tighten *