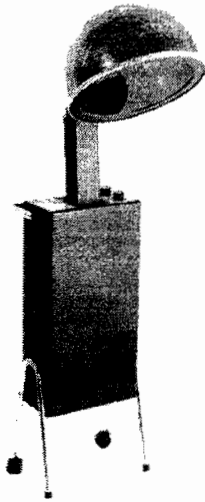




Model 2000 Hair Dryer



Features:

- UL/CSA approved
- 100 Watt Convenience Outlet
- Adjustable Thermostat including Perm Setting
- Electronic 60-Minute Timer with Cool Down Period
- All-Lexan Smoked Jumbo Inner & Outer Hoods
- Removable Air Filter
- Dryer Leg and Handle Sets Available as Accessory
- Made in USA

Dimensions:

Cabinet: 12-1/4" W x 23-3/4" H x 6-1/2" D

Hood: 12-1/4" (inside diameter)

Air Velocity:

375 / 400 CFM

Electrical Rating:

UL and CSA Approved

120 VAC, 60 Cycle, 8.0 Amps (without Convenience Outlet)

120 VAC, 60 Cycle, 9.7Amps (with Convenience Outlet)

Heat Output:

(Tested at 118 Volts, 8-8.5 Amps, 980 Watts)

<u>Thermostat Setting</u>	<u>Temperature</u>
Low	85° to 90°
Medium	98° to 110°
Perm	140° plus

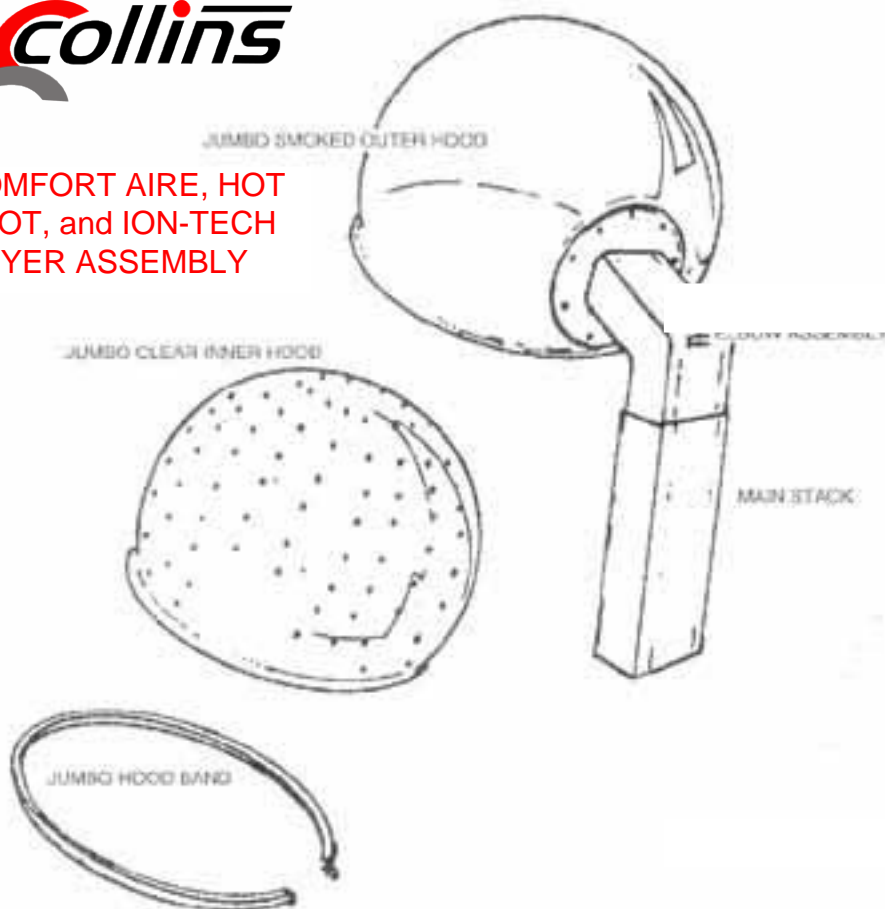
BTU / Hour = 3334

IMPORTANT

Directions for Assembly of Inner and Outer Hoods



COMFORT AIRE, HOT
SPOT, and ION-TECH
DRYER ASSEMBLY



1. Remove Inner and Outer Hoods from box and plastic bag.
2. Remove Hood Band from Outer Hood.
3. Insert Inner Hood into Outer Hood. Be sure to align slot in Flange on front part of Hood so that non-perforated sections of Inner Hood will be to the sides. (This is to protect customers' ears from heat.)
4. Install Hood Band.



Assembly Instructions Hair Dryer Legs and Handle

Kit Contents:

Qty	Description
2	Dryer Leg
2	End Cap, Black
2	Wheel Assembly
1	Handle
2	Washer, 5/16
2	Jam Nut, 5/16-18
6	Screw, #8 x 1
4	Screw, #10 x 1/2"

Steps for assembly:

1. Press black end cap onto end of each leg.
2. Screw jam nut onto wheel assembly stud, slip 5/16 washer over stud and screw into dryer leg.
3. Assemble both dryer legs onto hair dryer with #8 x 1" screws (3 per leg).
4. Set dryer upright on legs. Stabilize dryer by adjusting wheel stud. Once set, lock into position by securing the jam nut against the leg end.
5. Attach handle to the dryer with #10 x 1/2" screws (2 per side).

