

**Preliminary
Not For Construction**

This drawing is the property of Collins Manufacturing Company and is protected under copyright law.


Quantity -

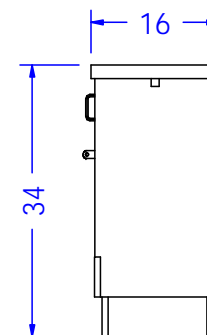
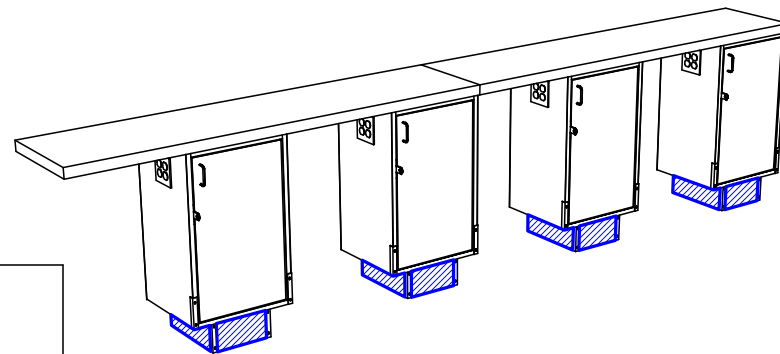
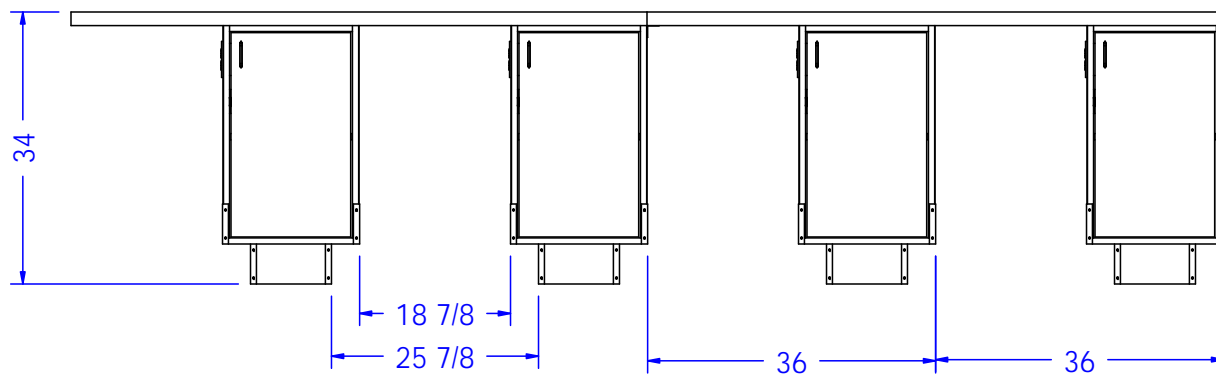
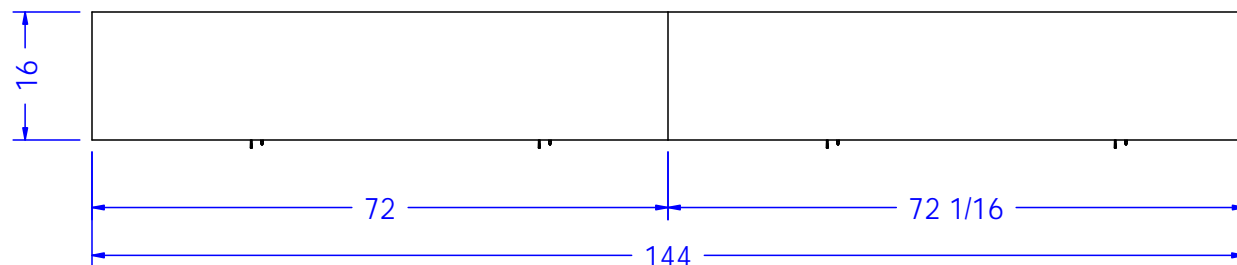
Finish Schedule -
Face Color -
Top Color -
Toe Color -
Reveal
Hardware - S/S Hasp
Interior - Black Melamine
Other (Specify) - N/A

This drawing represents Collins Manufacturing Company's understanding of the desired item as was previously priced & ordered. Your signature indicates you have reviewed the drawing; and your approval will authorize Collins to initiate the acquisition of materials & subsequent production. More than modest changes may affect the price and/or manufacturing lead time.

- ☐ Approved as drawn.
- ☐ Approved w/ changes noted.
- ☐ Not approved - re-submit.

Signature _____
Company _____ Date _____

 Collins Manufacturing 2000 Bowser Road Cookeville, TN 38506		
Title:		
Size: NTS	Drawing Number:	Drawn By: Mike
Date: 07/22/08	Sheet	1 of 5



**Preliminary
Not For Construction**

This drawing is the property of Collins Manufacturing Company and is protected under copyright law.

Quantity -

Finish Schedule -

Face Color -
Top Color -
Toe Color -
Reveal / Accent Color -
Hardware - S/S Hasp
Interior - Black Melamine
Other (Specify) - N/A

This drawing represents Collins Manufacturing Company's understanding of the desired item as was previously priced & ordered. Your signature indicates you have reviewed the drawing; and your approval will authorize Collins to initiate the acquisition of materials & subsequent production. More than modest changes may affect the price and/or manufacturing lead time.

- ☐ Approved as drawn.
☐ Approved w/ changes noted.
☐ Not approved - re-submit.

Signature _____
Company _____ Date _____

Collins Collins Manufacturing
2000 Bowser Road
Cookeville, TN 38506

Title: _____
Size: NTS Drawing Number: _____ Drawn By: Mike
Date: 07/22/08 Sheet 2 of 5